

KATO

KR10H

RATED LIFTING CAPACITY (1)

BASED ON: BS1757 - 1986

DIN 15019 - 2

75% of Tipping Loads UNIT = (ton)

Outriggers Fully Extended - 360' full range

Working radius (m)	5.0m	8.3m	11.6m	14.9m	18.2m	21.5m
	Boom	Boom	Boom	Boom	Boom	Boom
1.5	10.00	5.00	5.00			
2.0	10.00	5.00	5.00	4.00		
2.5	10.00	5.00	5.00	4.00	4.00	
3.0	8.00	5.00	5.00	4.00	4.00	2.00
3.5	6.10	5.00	5.00	4.00	4.00	2.00
3.9		5.00	5.00	4.00	3.60	2.00
4.2		5.00	4.50	4.00	3.40	2.00
4.5		4.55	4.20	3.75	3.20	2.00
5.0		4.05	3.80	3.40	2.90	2.00
5.5		3.70	3.45	3.05	2.65	2.00
6.0		3.35	3.15	2.80	2.47	2.00
6.5		3.05	2.90	2.55	2.30	1.90
7.0			2.65	3.35	2.15	1.80
8.0			2.25	2.00	1.90	1.60
9.0			1.90	1.75	1.65	1.40
10.0			1.55	1.53	1.45	1.23
11.0				1.33	1.28	1.10
12.0				1.15	1.13	1.00
13.0				0.95	1.00	0.90
14.0					0.90	0.80
15.0					0.75	0.72
16.0					0.65	0.65
17.0						0.57
18.0						0.50
19.0						0.42
20.0						0.35
Critical Boom Angle		-		-		-
Parts of line	8	4	4	4	4	2

*Main Hook Weight: 75kgs

* Auxilliary Hook Weight: 20kgs

21.5M Boom & 1.8m Fly JIB

21.5m Boom

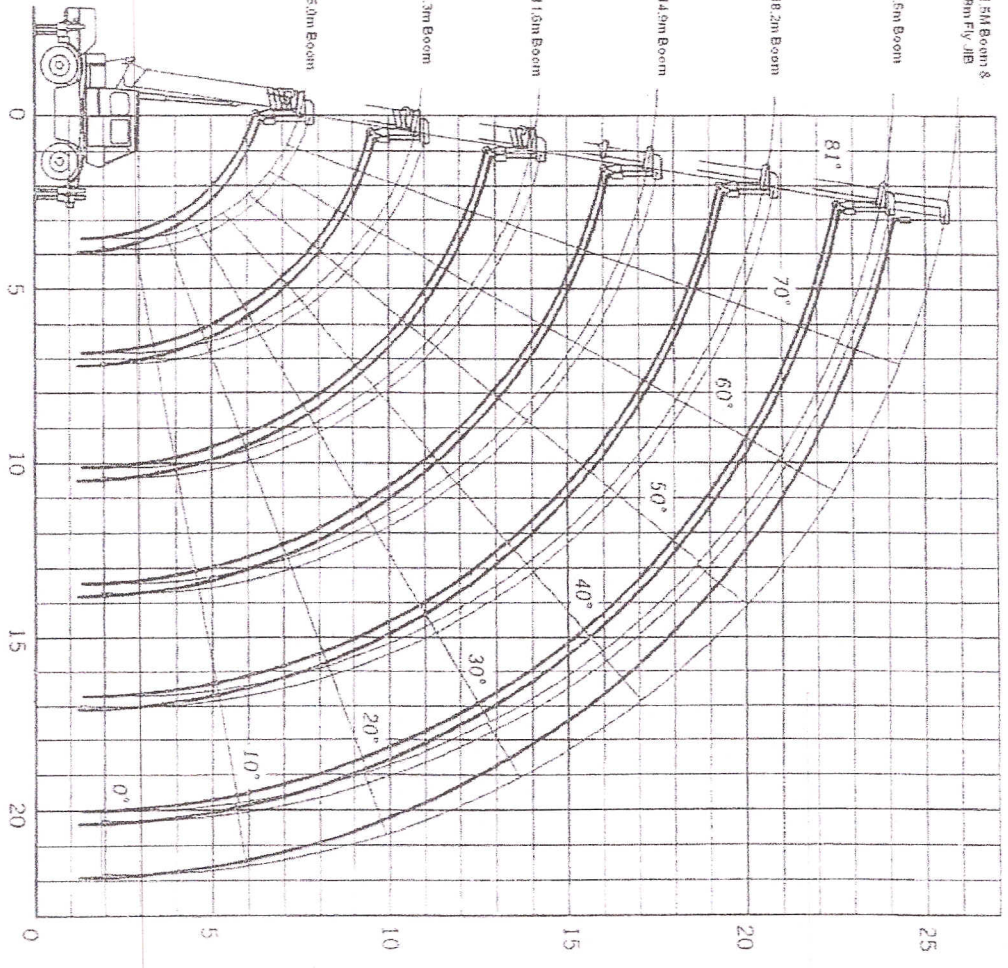
18.2m Boom

14.9m Boom

11.6m Boom

8.3m Boom

5.0m Boom



RADIUS FROM SLEWING CENTRE (M)

HEIGHT ABOVE GROUND (M)

NOTE: This does not include deflection of Boom & Fly JIB